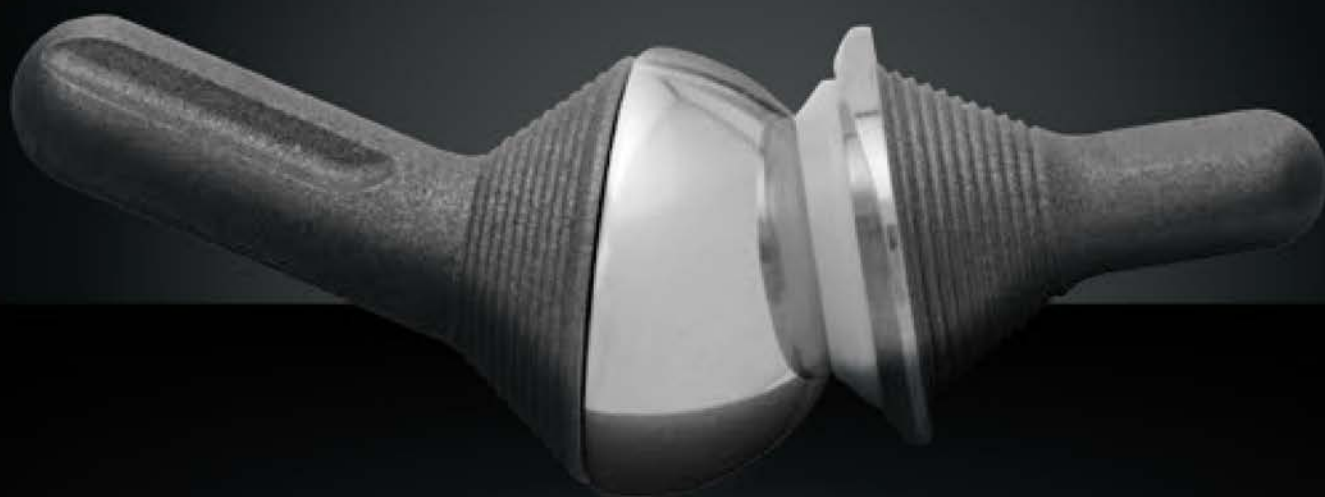


# ReFlexion™

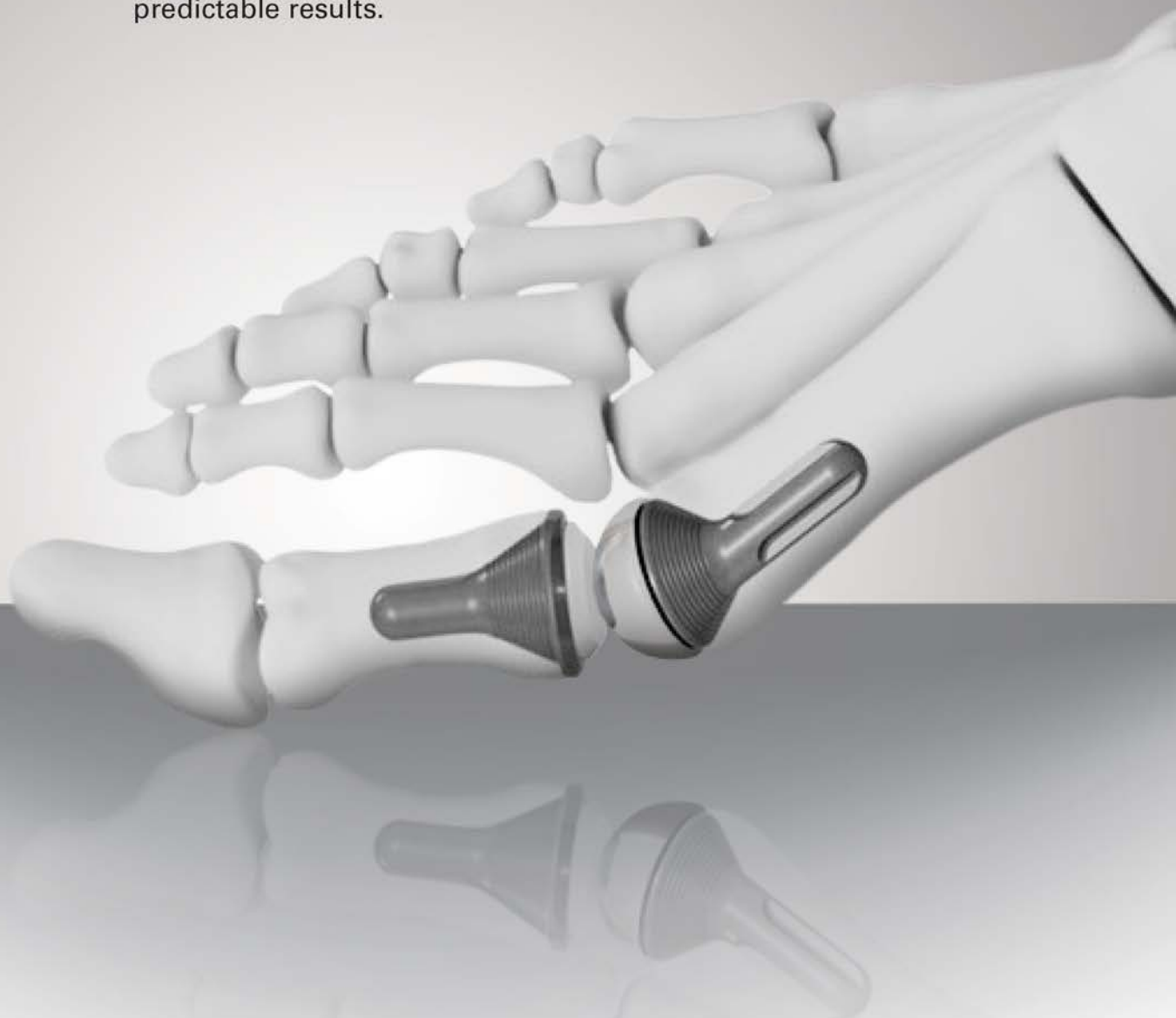
1<sup>st</sup> MTP Implant System



*Rethinking Possibilities, Reshaping Lives*

# a SOLUTION that gives your patient OPTIONS

The ReFlexion Great Toe Implant is an alternative for the patient who desires a functional MTP joint. The unique three-piece implant replaces the metatarsophalangeal joint resulting from osteoarthritis, rheumatoid arthritis, traumatic arthritis or revision of previous arthroplasty. The implant preserves the function and sesamoid anatomy, while the ball and socket design of the ReFlexion implant provides stability and predictable results.



# THREE PIECE DESIGN

allows for patient specific implant selection  
with 27 different sizing combinations

# COMPREHENSIVE INSTRUMENTATION

in sequenced layout for surgical efficiency

# CONE DESIGN

of implant stems ensure maximum contact between the implant  
and cortical wall, resulting in inherent joint stability

# JOINT FUNCTION

is restored in candidates with  
Hallux Rigidus and Revision Surgery

# SPHERICAL HEAD

provides flexibility of the articulating surface  
reducing wear of the phalangeal component

# ANGLED METATARSAL

stem design allows for intramedullary canal  
placement and proper load distribution



# The Implants

ReFlexion is comprised of a titanium metatarsal angled stem and a cobalt chromium metatarsal head, providing a spherical articulating surface for the phalanx component.

The phalanx implant features a titanium stem and an inlay of UHMWPE on the articulating surface.



ReFlexion<sup>TM</sup>  
1<sup>st</sup> MTP Implant System

## PHALANX COMPONENT

possessing superior impact strength and  
high resistance to abrasion wear





## The System

ReFlexion offers a comprehensive instrumentation system that utilizes reaming technology. The assorted reamers provide patient specific options that yield 27 different combinations while maximizing the interface between implant and cortical bone.



## Complementary Products:



**fps**<sup>™</sup>  
foot plating system



**EXTREMIFIX**<sup>™</sup>

Cannulated Screw System  
2.0mm, 2.4mm, 3.0mm, 4.0mm  
Cannulated Screw System

## Other 1<sup>st</sup> MTP Solutions:



**enCompass**  
Metatarsal Resurfacing Implant



**hemi**  
Great Toe Implant



**fps**<sup>™</sup>  
1<sup>st</sup> MTP  
Fusion Plate



*Rethinking Possibilities, Reshaping Lives*

### OSTEOMED

3885 Arapaho Rd.

Addison, TX 75001

Customer Service: 800.456.7779

Customer Service Fax: 800.390.2620

[www.osteomed.com](http://www.osteomed.com)

P/N 030-1048 Rev.F



A COLSON ASSOCIATE